

Queens Court, Queens Road, TW10

Approximate Gross Internal Area = 834 sq ft / 77.5 sq m

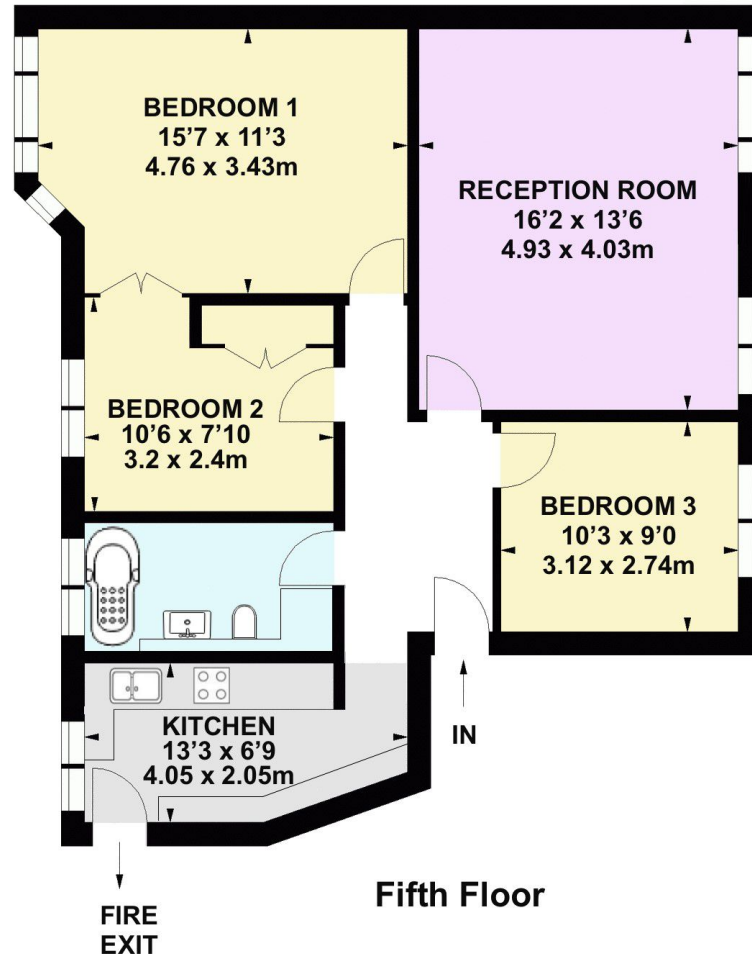


Illustration for identification purposes only, not to scale
All measurements are maximum, and include wardrobes and window bays where applicable

Whilst every attempt has been made to ensure the accuracy of the floor plan contained here, measurements of doors, windows, rooms and any other items are approximate and no responsibility is taken for any error, omission, or mis-statement. This plan is for illustrative purposes only and should be used as such by any prospective purchaser.