

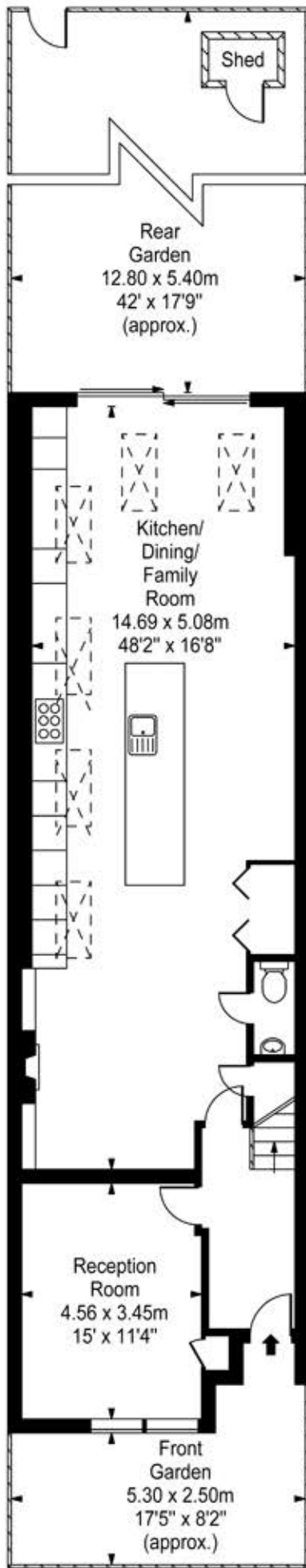
Selwyn Avenue

Approx. Gross Internal Area

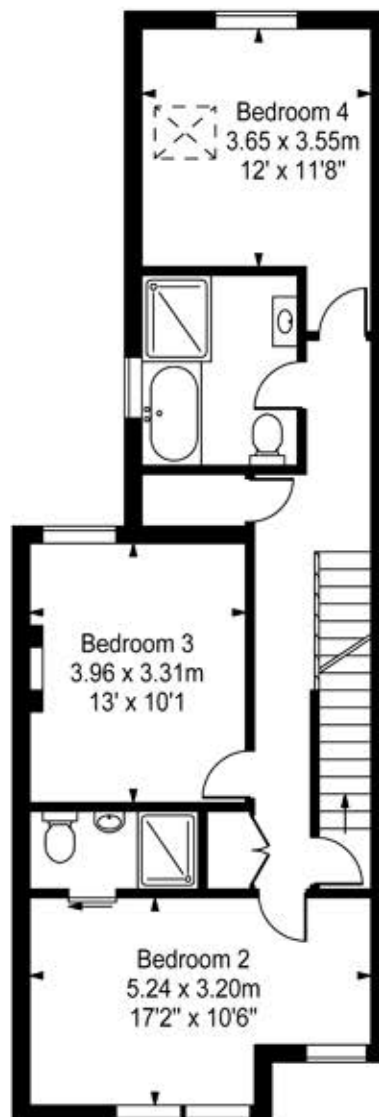
216 Sq M - 2325 Sq Ft

Key:

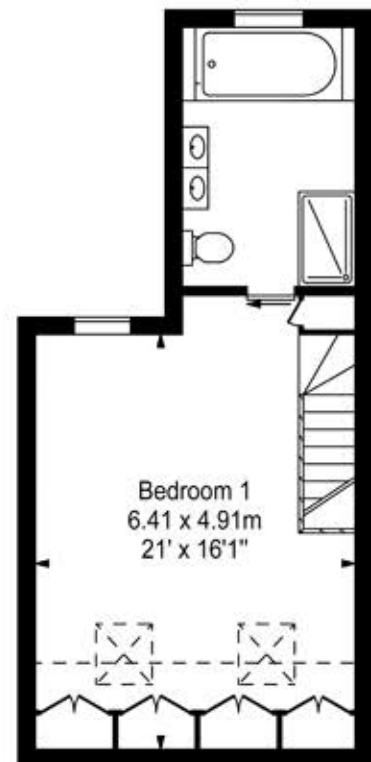
-- = Reduced headroom below 1.5m / 5'0"



Ground Floor



First Floor



Second Floor

Every attempt is made to assure accuracy, however measurements are approximate and for illustrative purposes only. Not to scale.

Floor plan by www.frameworkphotos.co.uk