

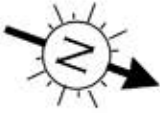
Kelsall Mews

Approx. Gross Internal Area
255 Sq M - 2744 Sq Ft

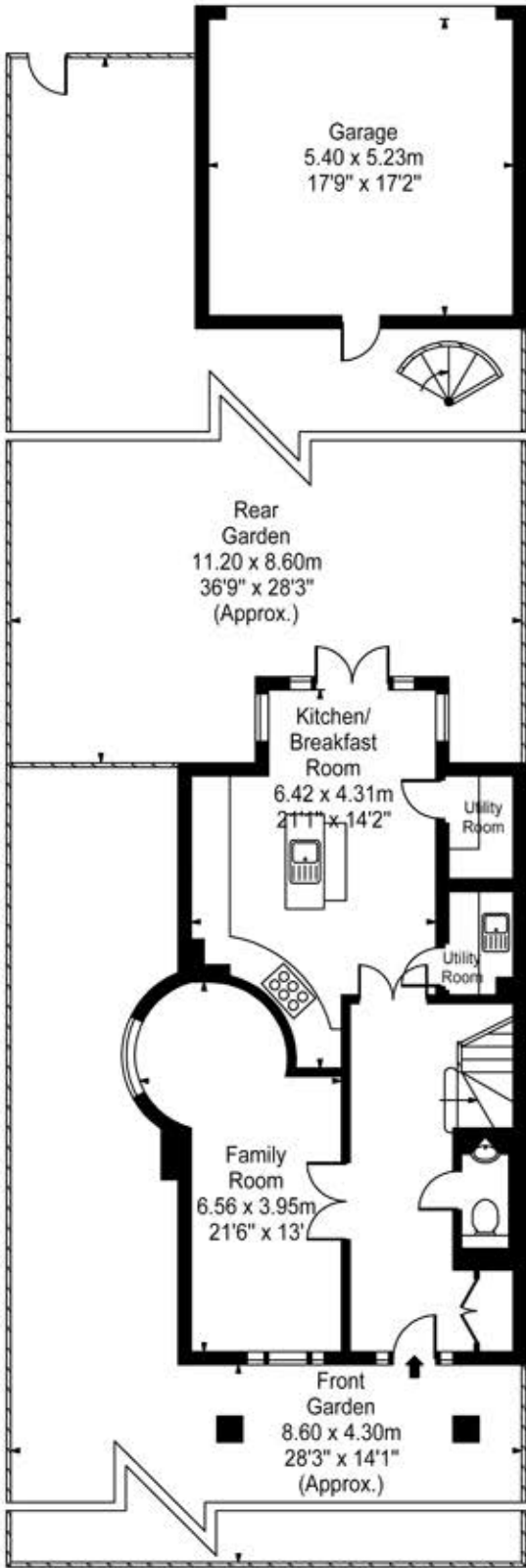
(Excluding Garage & Studio)

Garage & Studio: 613 Sq Ft

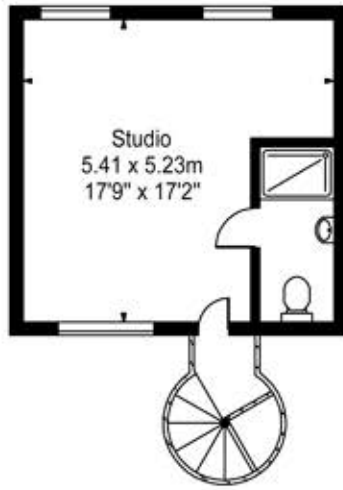
Total: 312 Sq M - 3358 Sq Ft



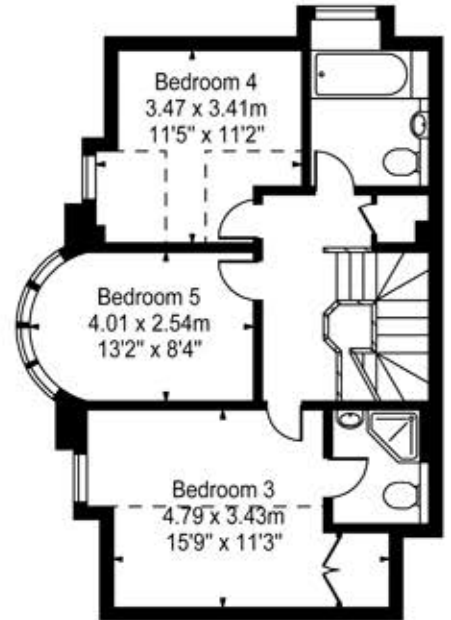
Key:
- - - - Reduced headroom below 1.5m / 5'0"



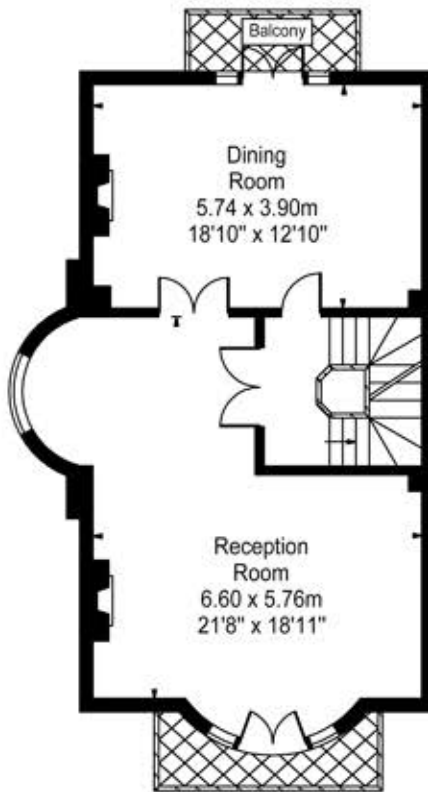
Ground Floor



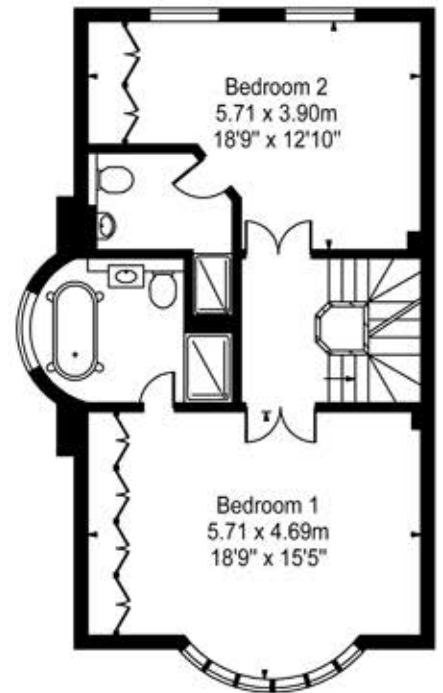
First Floor



Third Floor



First Floor



Second Floor

Every attempt is made to assure accuracy, however measurements are approximate and for illustrative purposes only. Not to scale.

Floor plan by www.frameworkphotos.co.uk