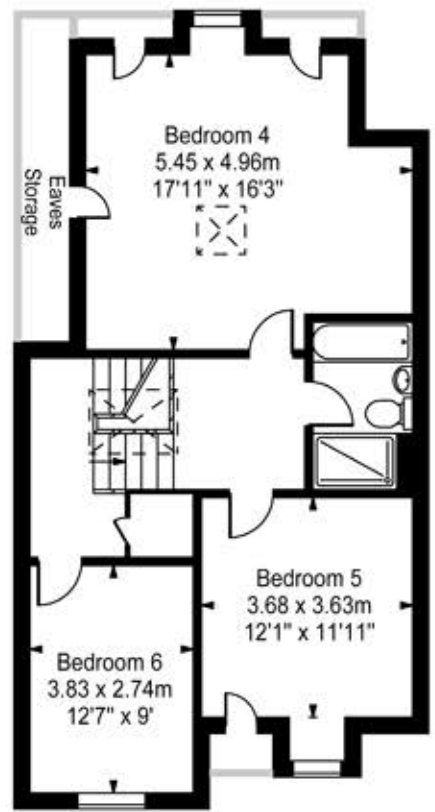
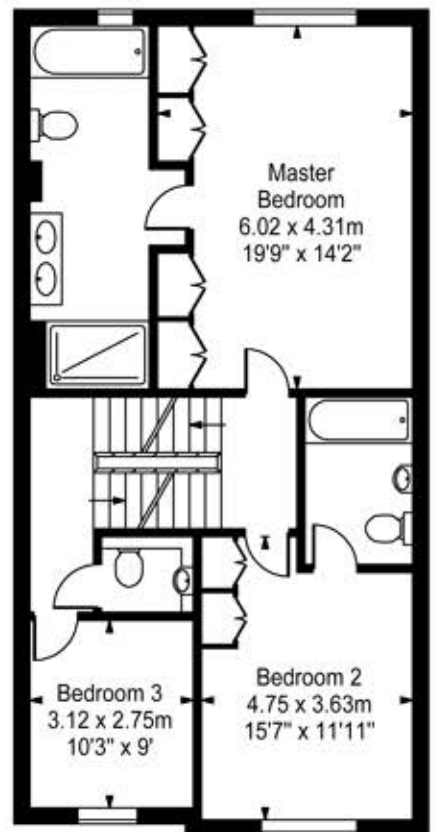


Pomeroy Close

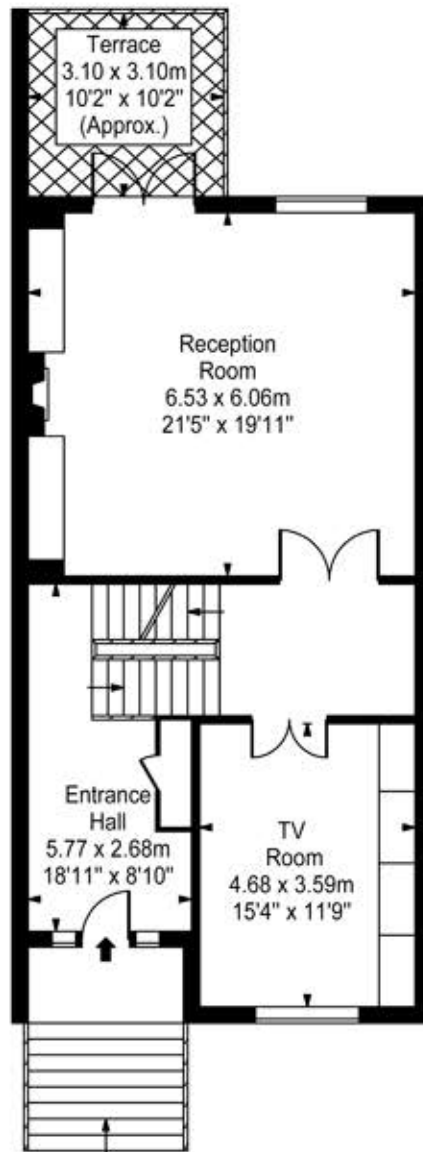
Approx. Gross Internal Area
345 Sq M - 3713 Sq Ft
 (Including Eaves Storage)



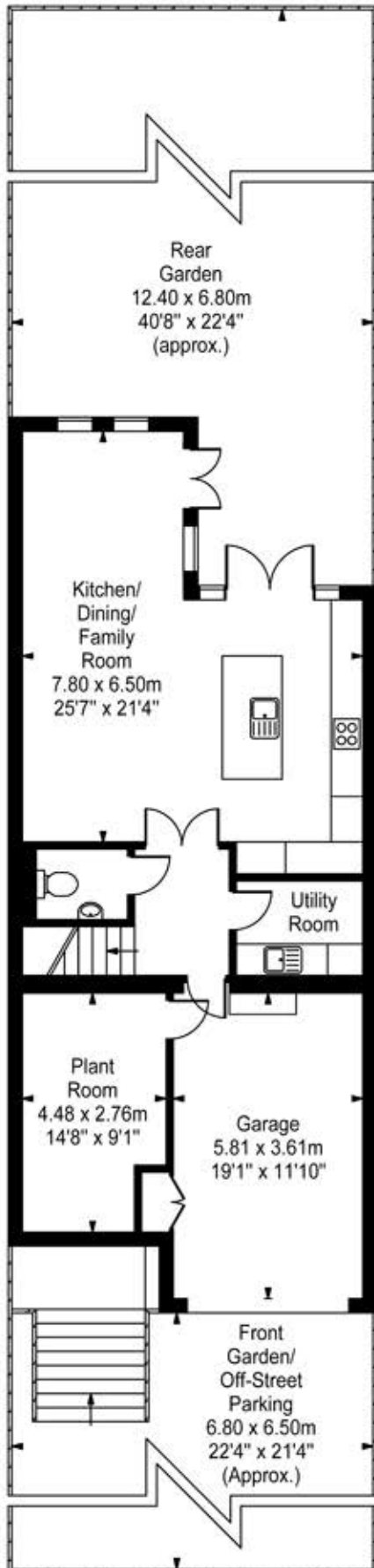
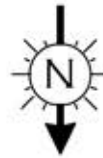
Second Floor



First Floor



Raised Ground Floor



Lower Ground Floor

Every attempt is made to assure accuracy, however measurements are approximate and for illustrative purposes only. Not to scale.

Floor plan by www.frameworkphotos.co.uk